

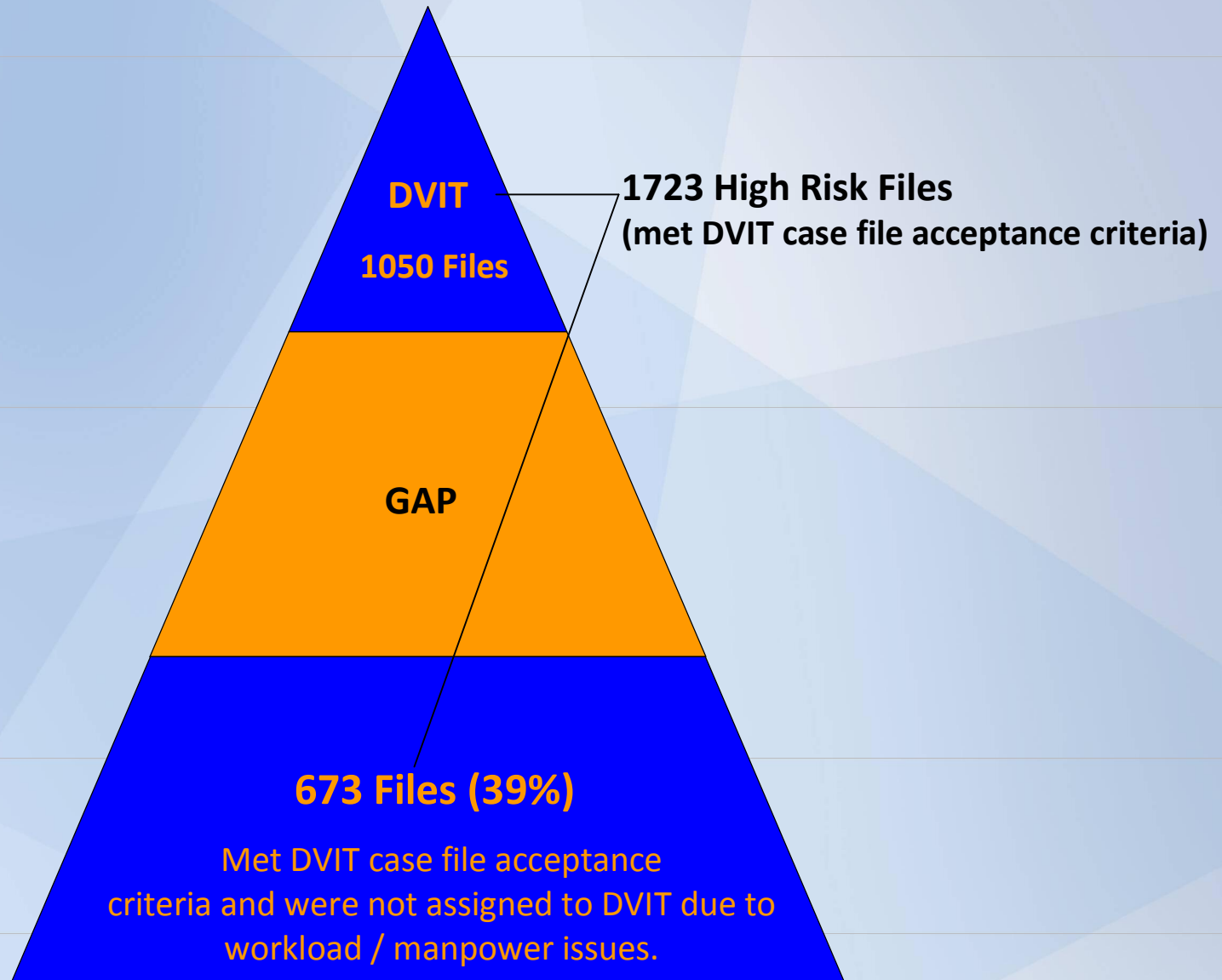
**DOMESTIC
VIOLENCE
REDUCTION
STRATEGY**



Situation in 2009:

- Assaults in SE Division increasing; many of which were Domestic Violence.
- Only some high risk files were assigned to DVIT; others were assigned to VSU. Gap identified.

EPS Investigated 6965 Reports of Domestic Violence (2009)



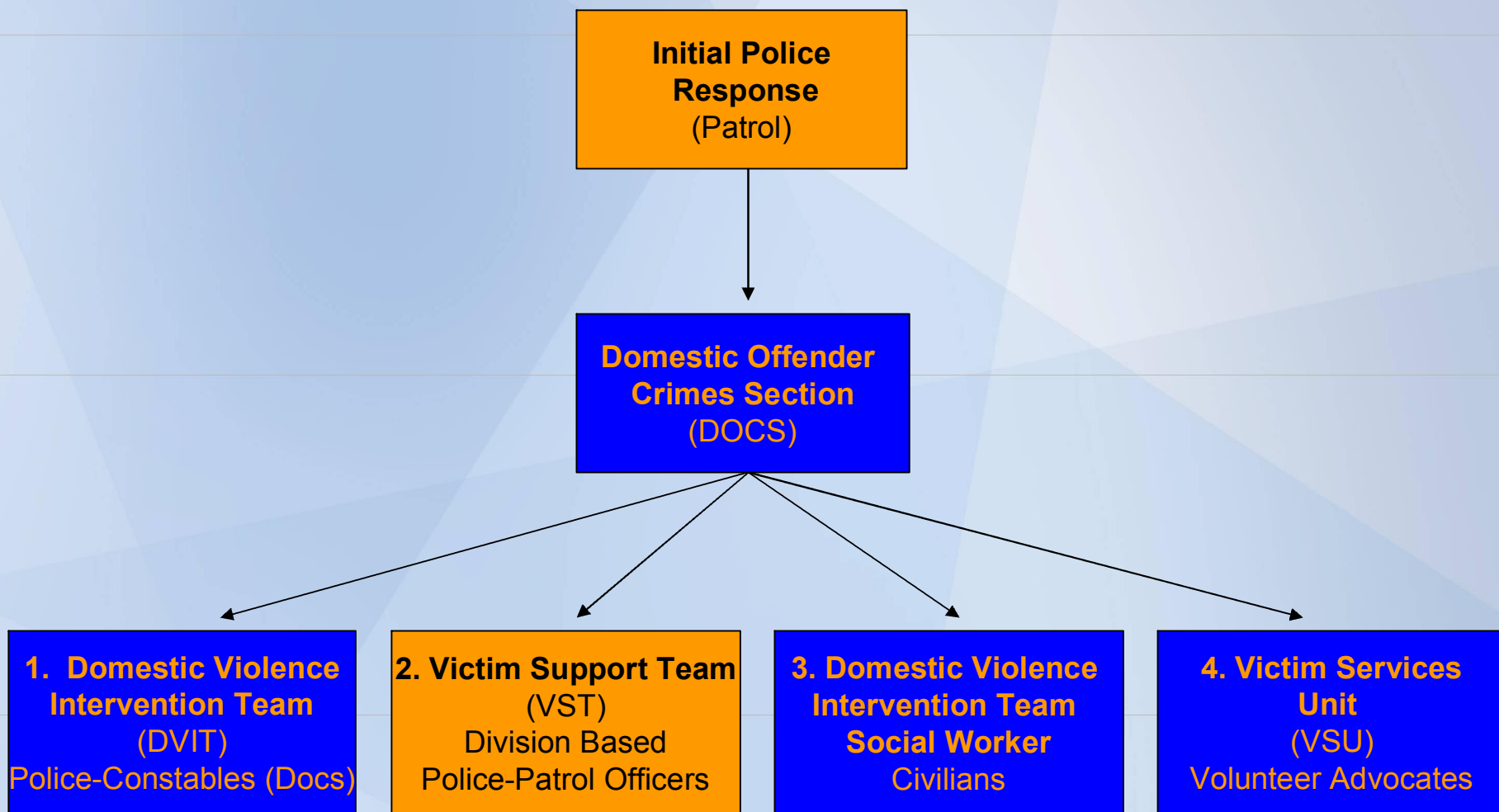
Situation in 2009: Cont'd...

- Minimal communication - Divisions did not know what files DVIT was assigned.
- Limited Domestic Violence resource information available for Divisional patrol officers to give to victims.

Response:

- Requested DOCS to send unassigned DVIT files to Southeast Division.
- Two constables per squad “self-selected” to be Victim Support Team (VST) constables and conduct safety planning on these files.
- Maximum two VST files/constable/month.
- Domestic Violence brochure developed outlining the resources available to victims (14 000 printed).

Current Intervention Response Model



2012 Outcomes:

- Initiative went city wide: as part of Violence Reduction Strategy.
- DOCS identifies files in the Divisions that require further follow-up/safety planning; more victims receive intervention in the Divisions.
- 598 VST files were assigned to the Divisions (for follow-up/safety planning) by DOCS and 427 files to DVIT.
- Increased awareness and knowledge of Domestic Violence in the Division and the community.

Success Indicators:

- Uses existing resources, effectively and efficiently.
- Divisions work in collaboration with DOCS.
- Self-selection of VST constables working well.
- Over 90 VST constables trained city wide.
- Was easily implemented in other Divisions.
- 23% increase in reports of Domestic Violence to police in 2012 (7761 occurrences).

Success Indicators: Cont'd...

- Victim oriented - puts victims' needs first.
- Rapport between the VST constable and the victim has lead to further disclosure and additional medical evidence.
- Victims full of gratitude; surprised and impressed by the care exhibited by EPS.
- Education of victims is improving their safety.
- Our research to date shows that this level of intervention follow-up is not replicated by any other police agency in North America.

Offender Management

- Offender Management in the Divisions: 2013 Annual Policing Plan.
- Focus on offender – involves all Divisional patrol officers.