

Crime/Traffic Mapping



Status Update

May 15, 2013

Background

DDACTS basis:

New to Canada, already deployed in
USA

Direct correlation found between
Crime/Disorder and Traffic concerns

Data Sources

OTS

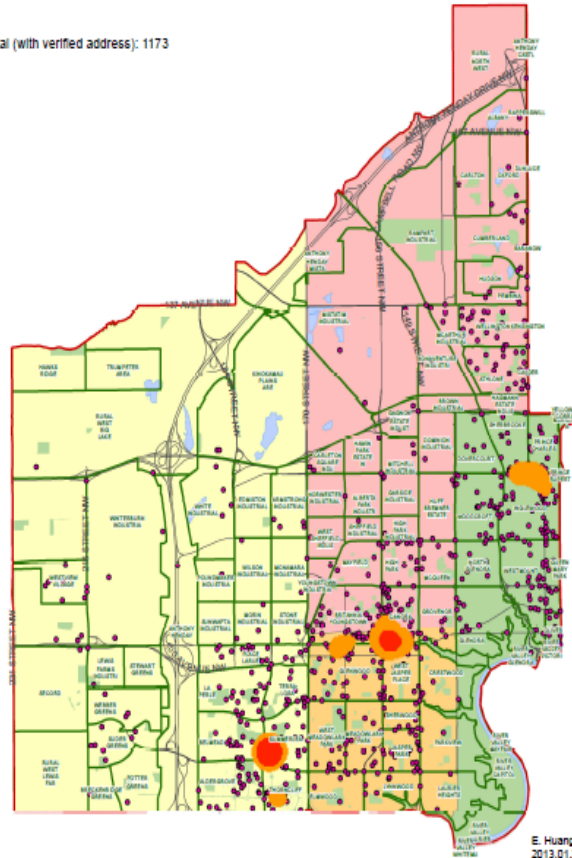
Top PR and Accident Sites in West Division (Jan-Sep 2012)



EPS Crime Data

WEST DIVISION 2012 VIOLENCE INDICATOR HOT SPOT MAP

Total (with verified address): 1173



Citizen complaints

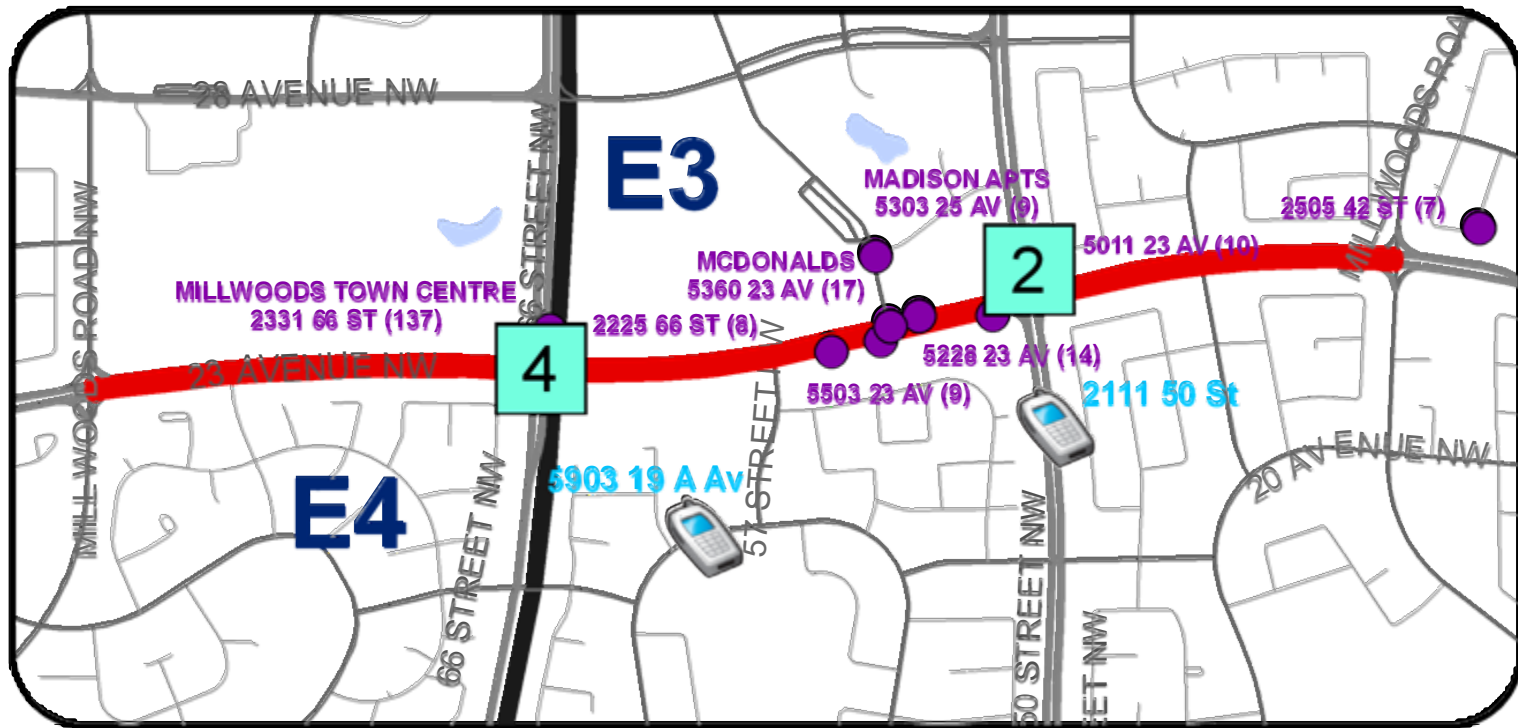
COMMUNITY COMPLAINT DETAILS	
COMPLAINT DETAILS	
t #	Date Received: 2013.03.19
	Active <input checked="" type="checkbox"/> Inactive <input type="checkbox"/> Complete <input type="checkbox"/>
	Concluded On:
Name:	142 ST / STONY PLAIN RD
Concern:	Division: West
Complaint:	Direction of Travel:
West Div. West Traffic Detail (Cst. SPEAR) responded to deal with the issue.	
COMPLAINT SOURCE	ASSIGNMENT
Complaint Made To: Communications	Councillor:
Contact: From Other	CADEventNum 13116528
City Info:	CityIDNumber:
Assigned To: West Traffic Detail at their request.	Assigned To (Division): 0
	Assigned To (Traffic): 0
	Assigned To (TrafficOT): 0
	Assigned To (External): 0
COMPLAINT ORT	
Community Van Ordered	<input type="checkbox"/> Community Van Ordered
Community Van Deployed	<input type="checkbox"/> Community Van Deployed
	PR 5
	Note
COMPLAINT ACTION AND RESULTS	
Complaint Action Taken:	
Complaint Activity- Division:	
Complaint Details: (if any):	
Date: May 13, 2013	

What we include

- Collision data
 - Automated enforcement data
 - Calls for service
 - Crime indicators
 - Problem addresses
 - Whatever your heart desires...
- 

Legend

- Repeat Call For Service Locations (< 200m)
- 📞 Community Complaints (< 6 Months)
- Target Roadway
- 📞 Community Complaints (< 6 Months)
- Target Roadway
- 📞 Community Complaints (< 6 Months)
- Target Roadway



Deployment Orders

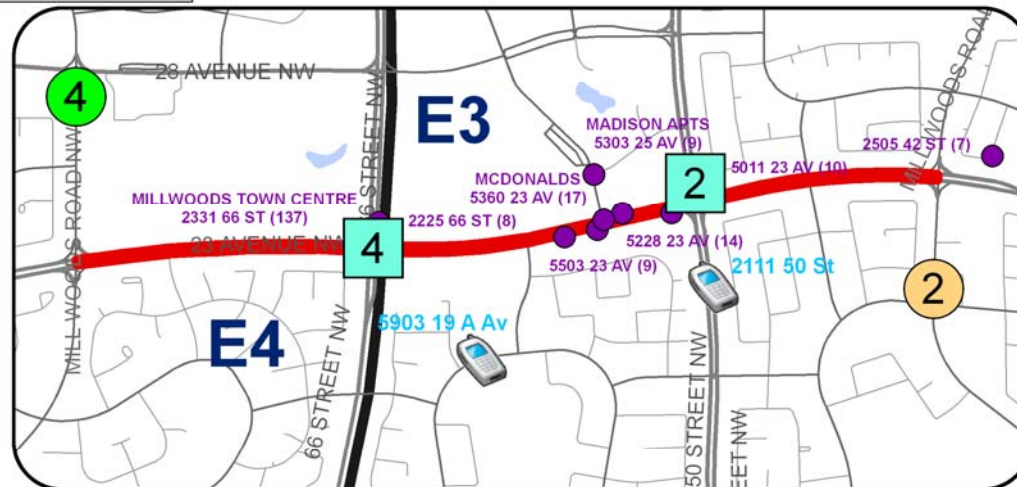
File# 13-51052

Legend

- Top PR Sites (Tickets)
- Top PR Sites (Speeds)
- Top Collision Location - Midblock (2012)
- Top Collision Location - Intersection (2012)
- Repeat Call For Service Locations (< 200m)
- Community Complaints (< 6 Months)
- Target Roadway

Crime and Traffic Target Locations

Southeast Division (E3/E4)
23 Av from Millwoods Rd E - Millwoods Rd



Rank (Divisional)	Type	Measure	Location	Notes
2	Collisions	Top Intersection	23 Av / 50 St	49 Collisions in 2012
2	Photo Radar	Top Speeds	Millwoods Rd E / 18 - 23 Av	Average violator speed 70
4	Photo Radar	Top Tickets	Mill Woods Rd / Lakewood Rd N	2.9 tickets per 100 cars
4	Collisions	Top Intersection	23 Av / 66 St	41 Collisions in 2012

Prepared By: A. Bouthillier
Traffic Planning & Analysis Unit
Print Date: 2013.05.15

Note:

- Collision and PR Rankings are by Division
- Repeat Calls for Service for one building or complex were combined

Why it will work...



Current information

- **Members submit follow-up report to a master file**
- **Little to no increase to already heavy workload of patrol members**
- **Quarterly reports from OTS**

Questions?

