



Edmonton Police Service Continuity of Operations Plan

Presented for Information
Edmonton Police Commission

March 19, 2015
Sgt. Grant Jongejan



Continuity of Operations (COOP)

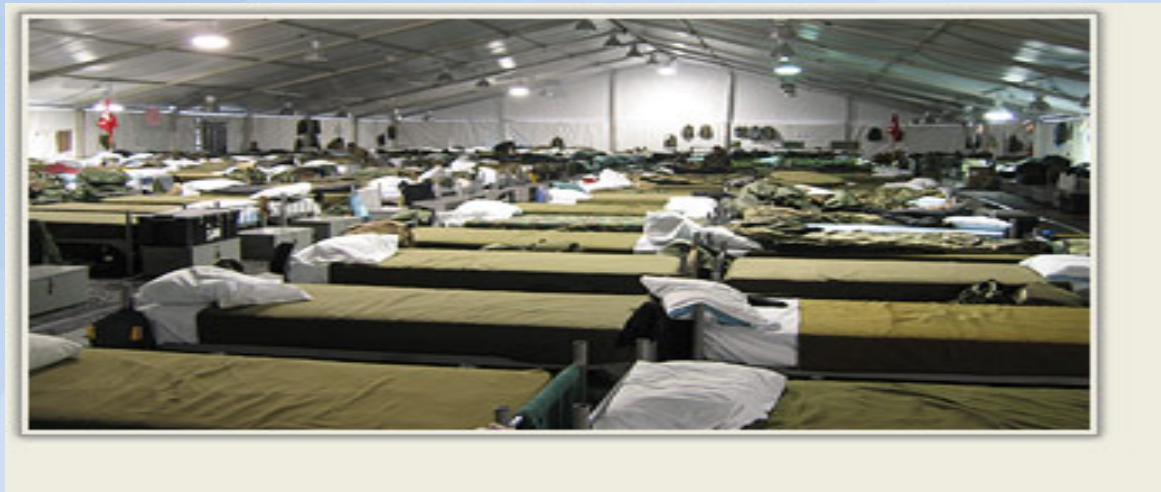
- Only two directions, prepared or NOT!
- “The ability to provide police services during an emergency or disaster”





Historical COOP

- Police operations based on army doctrine
- Based on old assumptions of community support





The Modern COOP

- Business Continuity
- In house redundancy
- 'Hot' sites
- Data recovery



Special Role of Police

Expectations

- Emergency response
- Uninterrupted police services
- Prepared organization

Delivery

- To the disaster event
- 911 response on phone and with police
- Plans/testing



What Police Deliver

- Responsibilities of police are the most diverse of any emergency service agency.
 1. Life Saving*
 2. Security
 3. Ensure Transportation Routes
 4. Evacuation
 5. Investigation



Edmonton Police Service

- COOP is based on best practices from military doctrine, business continuity and police practices
- Unique and balanced approach emphasizing *All Hazards Planning.....*





EPS Plan is Based on the Following Negative Assumptions

- Loss of Critical Infrastructure
- Loss of Communications
- Loss of Significant Numbers of Personnel



Key Definitions

- Emergency
- Disaster
- Catastrophe

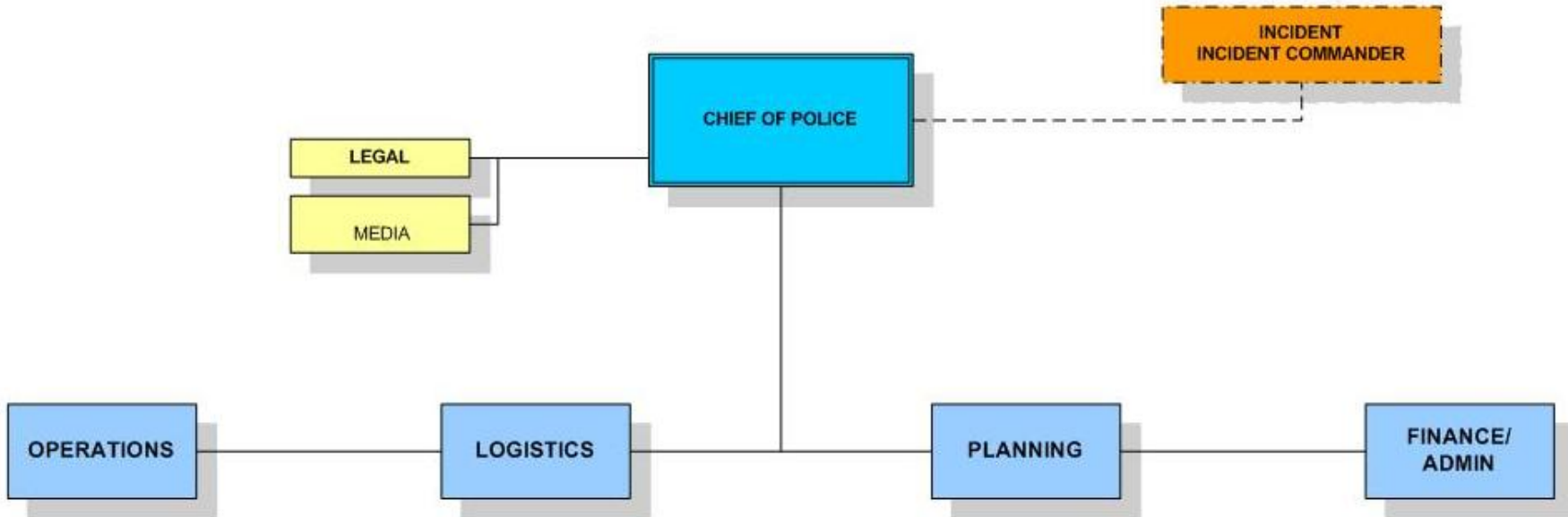


Emergency Operations Response Committee

EDMONTON POLICE SERVICE
EMERGENCY OPERATIONAL RESPONSE COMMITTEE (EORC)
EMERGENCY SAFETY COMMITTEE (ESC)



EMERGENCY OPERATIONAL RESPONSE COMMITTEE EORC





Principles of Incident Command System Utilized

- ICS identified command roles
- ICS span of control
- ICS terminology
- ICS objectives
- Communication Pathway



Operational Condition (OPCON) Model

- The main tool to assist in decision making
- Covers all three identified assumptions
- Provides scalable tool to evaluate and determine response options
- Provides guidelines



Area Templates

- Developed to identify key areas of consideration
- Provide information on major organizational areas
- Ignore “Pandemic” Title
- Increased from 16 identified areas to the entire Service.





Template Categories (8)

- Identified Core Functions
- Essential products/services utilized
- Plan for critical supplies/services
- Supply and service vendor list
- Plan for continuance of core functions
- Plan for shutdown of non core functions
- Key security concerns – plan to minimize risk
- Action plan template



How does the template help?

- Provides key area personnel identification
- Provides plans specific to area
- Provides framework for continuance of operation
- Provides confidence!!!



Current Gaps

- Dedicated & Established EPS “Program”
- Cohesive Plan
- Education for entire Service
- Training specific target groups
- Evaluation



Summary

- COOP is operations based
- Based on core police functions
- ICS command/control
- Decision making tools designed for All Hazards



Questions?