



Edmonton Police Service 2010 Annual Policing Plan Highlights

Chief David Korol
January 20th, 2011



2010 EPS Highlights

Crime Reduction Improved

18.19%

- Assault reduced 7.3%
- Break and Enter reduced 17.73%
- Homicide - no change from 2009
- Theft from Vehicle reduced 21.67%
- Robbery reduced 22.14%
- Theft of Vehicle reduced 26.72%
- Sexual Assaults increased 33.33%
- Theft Over \$5000 reduced 21.76%



2010 EPS Highlights

Priority 1 Response Times

80.5% Target Met and Exceeded

Clearance Rates Improved

31.7% (2009) 37.3% (2010)



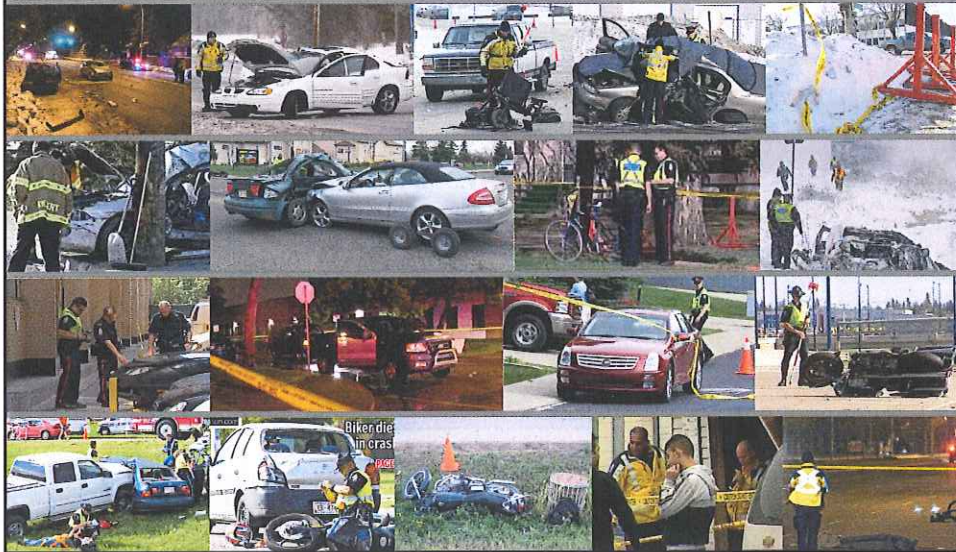
2010 EPS Highlights

Public Complaints Reduced

14%



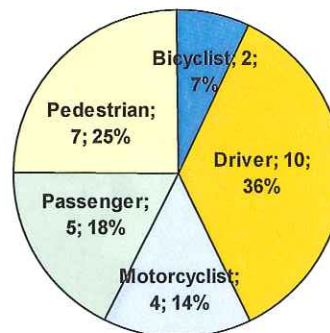
2010 Fatal Collisions



2010 Fatal Collisions – Fast Facts

- 25 Fatal collisions, 28 Fatalities
- 1/3 of fatally injured vehicle occupants (5; 33.3%) were unrestrained
- Of the 7 pedestrians killed, 2 were crossing with Right of Way, 1 was crossing without, and 4 were not crossing the street
- 12 Persons killed in 10 Impaired Driving Fatal Collisions

Category of Persons Killed in Fatal Collisions, 2010





2010 EPS Highlights

Traffic Safety

Injury Collisions reduced 18%

Property Damage Collisions reduced 10.3%

Service Vehicle Collisions reduced 11.8%



Questions ?